



ONE SANSOME  
SAN FRANCISCO

**NEWMARK**

**MIKE BROWN**  
VICE CHAIRMAN  
t 415.274.4423  
mike.brown@nmrk.com  
CA RE LIC #01200178

**ROMAN ADLER**  
EXEC MANAGING DIRECTOR  
t 415.274.4434  
roman.adler@nmrk.com  
CA RE LIC #01520766

**AARON GILLESPIE**  
SR MANAGING DIRECTOR  
t 415.445.5153  
aaron.gillespie@nmrk.com  
CA RE LIC #01971974



# ONE SANSOME

SAN FRANCISCO







 **ONE**  
SANSOME  
SAN FRANCISCO



# CONTENTS

05  
WELCOME  
HOME

07  
THE  
CONSERVATORY

08  
BUILDING  
HIGHLIGHTS

10  
AVAILABLE  
SPACES

16  
TRANSPORTATION

18  
AMENITIES

*\*Click page number to view section\**







# A BRIEF INTRODUCTION

---

One Sansome Street creates a refined and contemporary atmosphere for every guest that enters the building while paying homage to the history of the building and the City of San Francisco.

It transcends time and bridges the gap between nostalgic history and the modern aesthetic.

Welcome to One Sansome Street. A place that inspires creative freedom, refinement in process, and inspiration for an innovative future.





# A RICH HISTORY



The Conservatory at the base of One Sansome serves as a rich amenity center and gathering place directly connected to the One Sansome Street office tower. The historical space is enveloped in floor-to-ceiling granite and original 38' Doric columns dating back to 1910.

Initially designed by architect Albert Pissis for Anglo and London Paris National Bank, The Conservatory holds historical and architectural significance being one of the most notable bank buildings in downtown San Francisco. It was designed to mimic a temple, which was a popular architectural approach at the time to highlight a financial institution's status in the greater community.

The space features the Star Maiden, a statue by (Alexander) Stirling Calder, the acting-chief of the sculpture program for the Panama-Pacific Exposition, a World's Fair in San Francisco, California in February 1915.

The Class A One Sansome Street office tower was built in 1984 from steel construction preserving the original beauty of The Conservatory for future generations to enjoy.





# THE CONSERVATORY



Renderings (clockwise from top): Bar/Restaurant, Open Meeting Space, Tenant Amenity Center





Citigroup Center

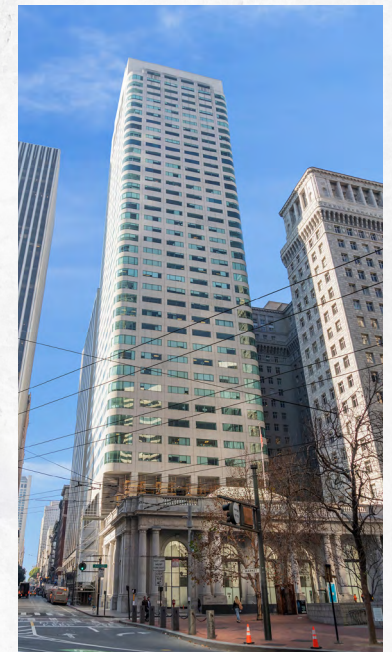
Montgomery

# BUILDING HIGHLIGHTS



# BUILDING HIGHLIGHTS

- 42-story, ±623,800 RSF, premier office tower located in the heart of the Financial District
- Fantastic Golden Gate Bridge to Bay Bridge views from upper floors
- Completely re-imagined ground plane with the restored Conservatory, new bar + restaurant with indoor/outdoor seating, & tenant amenity center including a conference facility
- 12'6" slab to slab heights
- 17,000 SF floorplates
- Floorplates accommodate office intensive and open plan users
- Direct access to Montgomery Street BART/MUNI station via secure tunnel
- Bicycle storage, showers and lockers on site
- Stable and committed hands-on ownership
- All office space equipped with state of the art fiber optic cabling



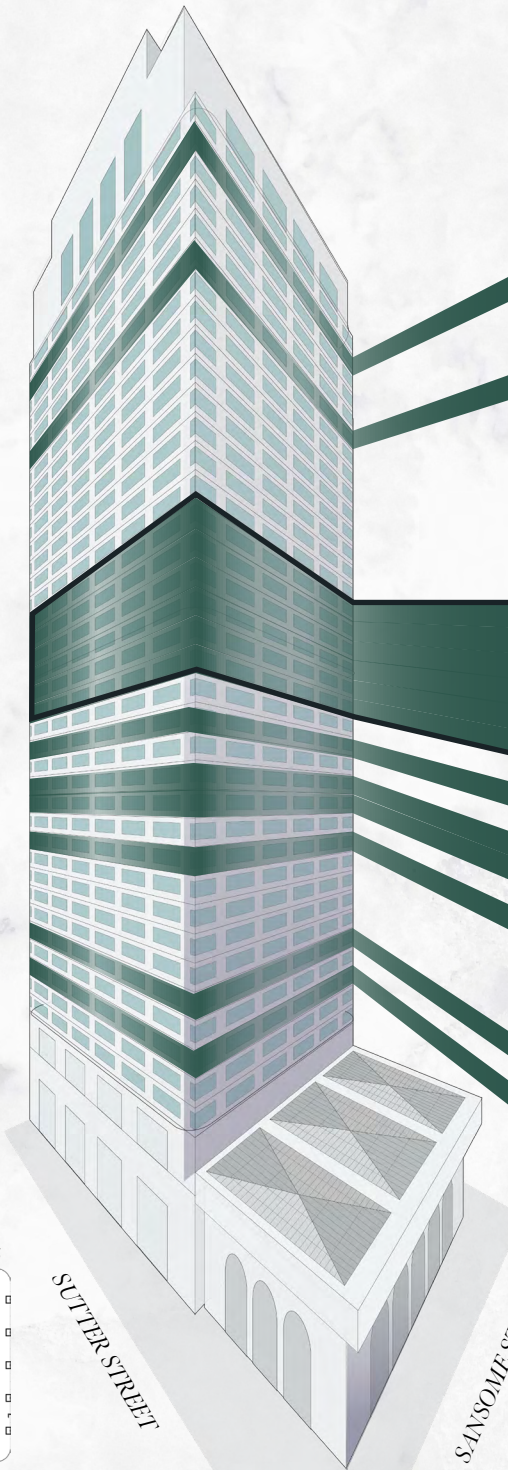




AVAILABLE  
SPACES

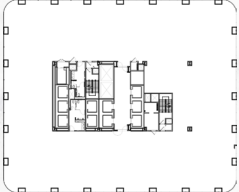


# STACKING PLAN



104,000 SF  
contiguous block

Click below to  
view floor plans



FL	SQ FT	ELEVATOR BANKS	FL
42			42
41			41
40	STE 4050: 11,451		40
39			39
38			38
37			37
36	STE 3670: 16,675		36
35			35
34			34
33			33
32			32
31			31
30			30
29			29
28			28
27	STE 2700: 17,384		27
26	STE 2600: 17,384		26
25	STE 2500: 17,414		25
24	STE 2400: 17,559		24
23	STE 2300: 17,559		23
22	STE 2200: 17,471		22
21			21
20	STE 2060: 1,945		20
19			19
18	STE 1800: 5,701    1810: 3,009    1895: 2,607		18
17	STE 1700: 16,811		17
16			16
15	STE 1500: 9,706		15
14			14
12			12
11			11
10			10
9	STE 900: 9,978		9
8			8
7	STE 700: 3,724    725: 2,265    750: 1,342		7
6			6
3			3
GRD			GRD









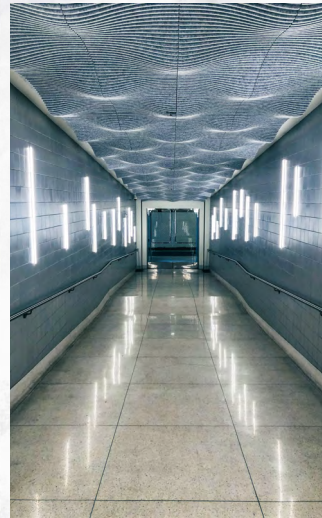
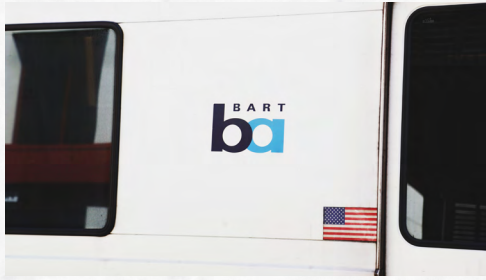












# EXCEPTIONAL CONNECTIONS

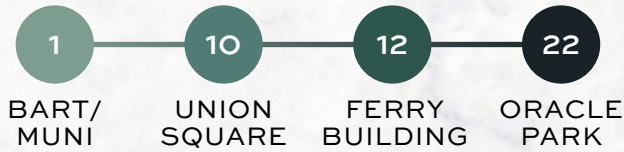
One Sansome is in a world-class location in the heart of the North Financial District, one of San Francisco's most desirable and connected submarkets. The building has direct access to Montgomery Street BART /MUNI Station and is surrounded by parking garages for monthly or daily parking just steps from the front door. The recently renovated tunnel from the Montgomery Street station allows tenants access directly from BART /MUNI into the secure building lobby.





# STAY CONNECTED

## WALKING TIME (MIN)

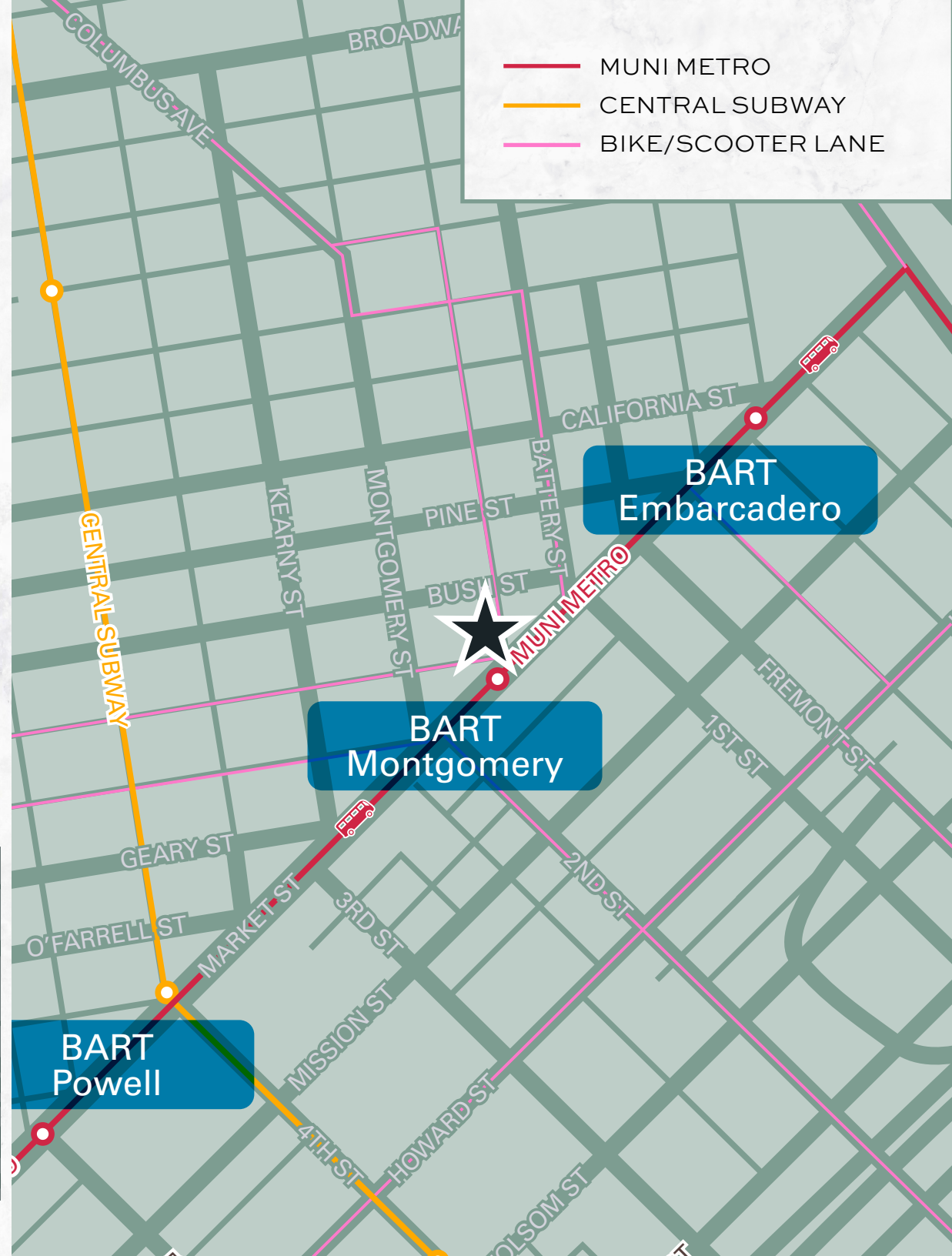
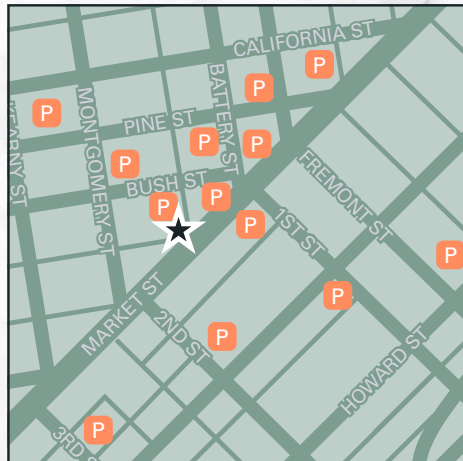


## DRIVING TIME (MIN)

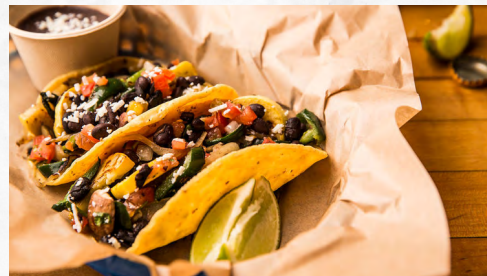
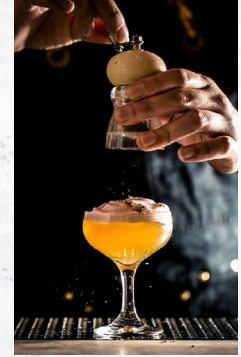


ADDRESS	\$/DAY	\$/MO
225 Bush	21	550
1 Bush	36	450
1 Front	20	415
555 California	35	475
101 California	25	500
177 Jessie	35	375
220 Bush	28	450
525 Market	34	475
235 Pine	22	460
55 Second	24	480
100 First	35	500
199 Fremont	35	450
100 Pine	36	475

Parking within 10 min walking







# AT YOUR FINGERTIPS

One Sansome Street benefits from the numerous and diversified amenities at its doorstep including hundreds of highly acclaimed restaurants, cafes, bars and lounges. The Crocker Galleria, located a few blocks away features an array of shops, local artisans, restaurants, a public outdoor roof deck, and a farmers market once a week.



# PERFECTLY PLACED

## CAFE

1. Philz Coffee
2. Bluestone Lane
3. illy Cafe
4. Blue Bottle Coffee

## FOOD/RESTAURANTS

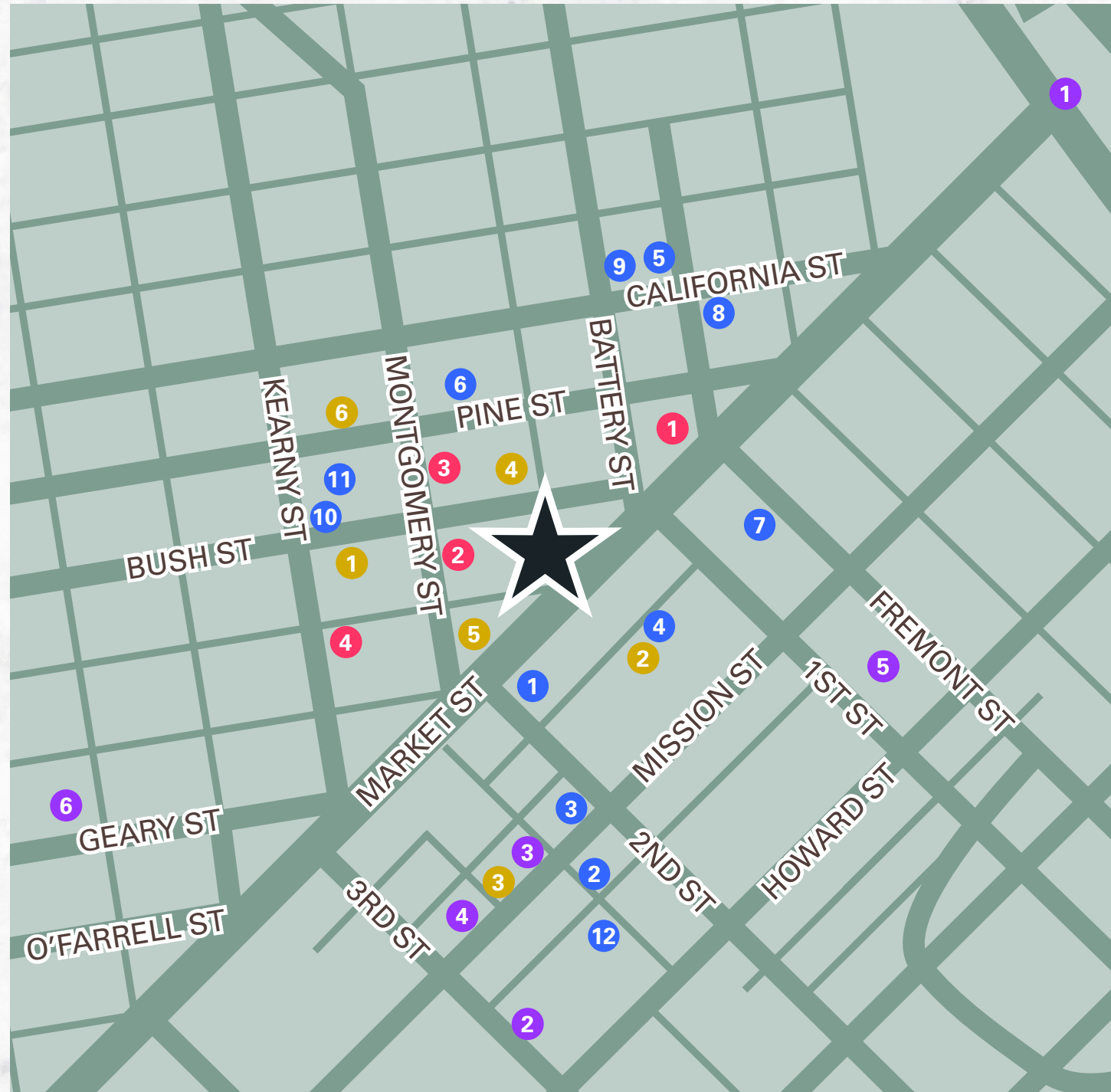
1. Uno Dos Tacos
2. The Bird
3. Luke's Lobster SoMa
4. Yank Sing
5. Perbacco
6. Credo
7. Barcha
8. Pabu Izakaya
9. Tadich
10. Sam's Grill & Seafood
11. Belden Place
12. Mourad

## BAR/LOUNGE

1. Pagan Idol
2. Louie's Bar
3. Novela
4. The Treasury
5. Sutter Station Tavern
6. The Vault

## PARK/ATTRACTION

1. Ferry Building
2. SF MOMA
3. California Historical Society
4. Contemporary Jewish Museum
5. Salesforce Park
6. Union Square











**ONE SANSOME**  
SAN FRANCISCO

**BARKER**  
**PACIFIC**  
**GROUP**

Barker Pacific Group, Inc. (BPG) is a firm of experienced real estate professionals active in the acquisition, development, construction management and asset management of major commercial projects. Founded in 1983, the company specializes in the development and acquisition of institutional-quality office, industrial and residential projects in select U.S. cities. As a developer, BPG has completed, developed or redeveloped in excess of \$3.5 billion in commercial projects. The company enjoys close relationships with major corporate and institutional partners who commend the Barker Pacific Group management team's commitment to excellence, entrepreneurial vision, business acumen and personal integrity.



PGIM Real Estate has consistently been the largest manager of worldwide institutional assets according to Pensions & Investments, an industry publication.

**MIKE BROWN**  
VICE CHAIRMAN  
t 415.274.4423  
mike.brown@nmrk.com  
CA RE LIC #01200178

**ROMAN ADLER**  
EXEC MANAGING DIRECTOR  
t 415.274.4434  
roman.adler@nmrk.com  
CA RE LIC #01520766

**AARON GILLESPIE**  
SR MANAGING DIRECTOR  
t 415.445.5153  
aaron.gillespie@nmrk.com  
CA RE LIC #01971974

ONE SANSOME STREET, FLOOR 41, SAN FRANCISCO, CA 94104

*The distributor of this communication is performing acts for which a real estate license is required. The information contained herein has been obtained from sources deemed reliable but has not been verified and no guarantee, warranty or representation, either express or implied, is made with respect to such information. Terms of sale or lease and availability are subject to change or withdrawal without notice.*